

ESCALAS I - Violoncelo

por Tiago Cox

Escala de D (RÉ Maior)

Two staves of musical notation for the D major scale in bass clef. The first staff shows the ascending scale: D2, E2, F#2, G2, A2, B2, C#3, D3. The second staff shows the descending scale: C#3, B2, A2, G2, F#2, E2, D2. The key signature has two sharps (F# and C#).

Escala de G (SOL Maior)

Two staves of musical notation for the G major scale in bass clef. The first staff shows the ascending scale: G2, A2, B2, C#3, D3, E3, F#3, G3. The second staff shows the descending scale: F#3, E3, D3, C#3, B2, A2, G2. The key signature has one sharp (F#).

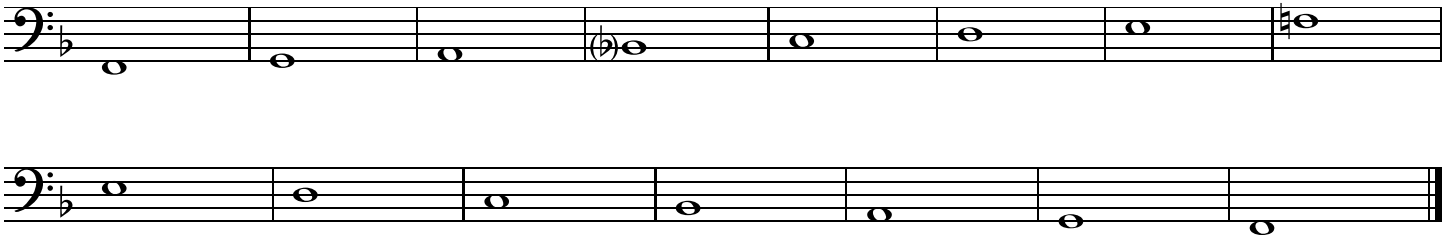
Escala de C (DÓ Maior)

Two staves of musical notation for the C major scale in bass clef. The first staff shows the ascending scale: C2, D2, E2, F2, G2, A2, B2, C3. The second staff shows the descending scale: B2, A2, G2, F2, E2, D2, C2. The key signature has no sharps or flats.

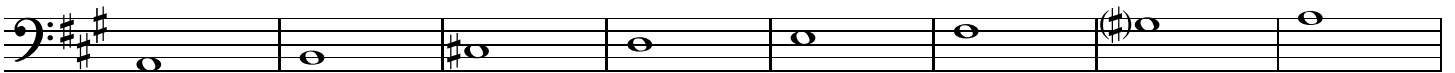
Escala de C (DÓ Maior) II

Two staves of musical notation for the C major scale in bass clef, second version. The first staff shows the ascending scale: C2, D2, E2, F2, G2, A2, B2, C3. The second staff shows the descending scale: B2, A2, G2, F2, E2, D2, C2. The key signature has no sharps or flats.

Escala de F (FÁ Maior)



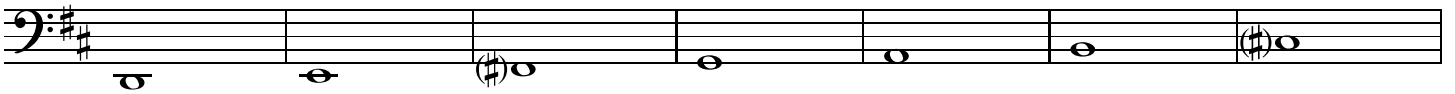
Escala de A (LÁ Maior)



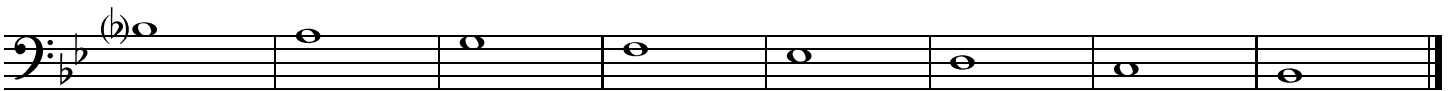
73



Escala de D (RÉ Maior) II



Escala de Bb (SI bemol Maior)



Escala de Eb (MI bemol Maior)

